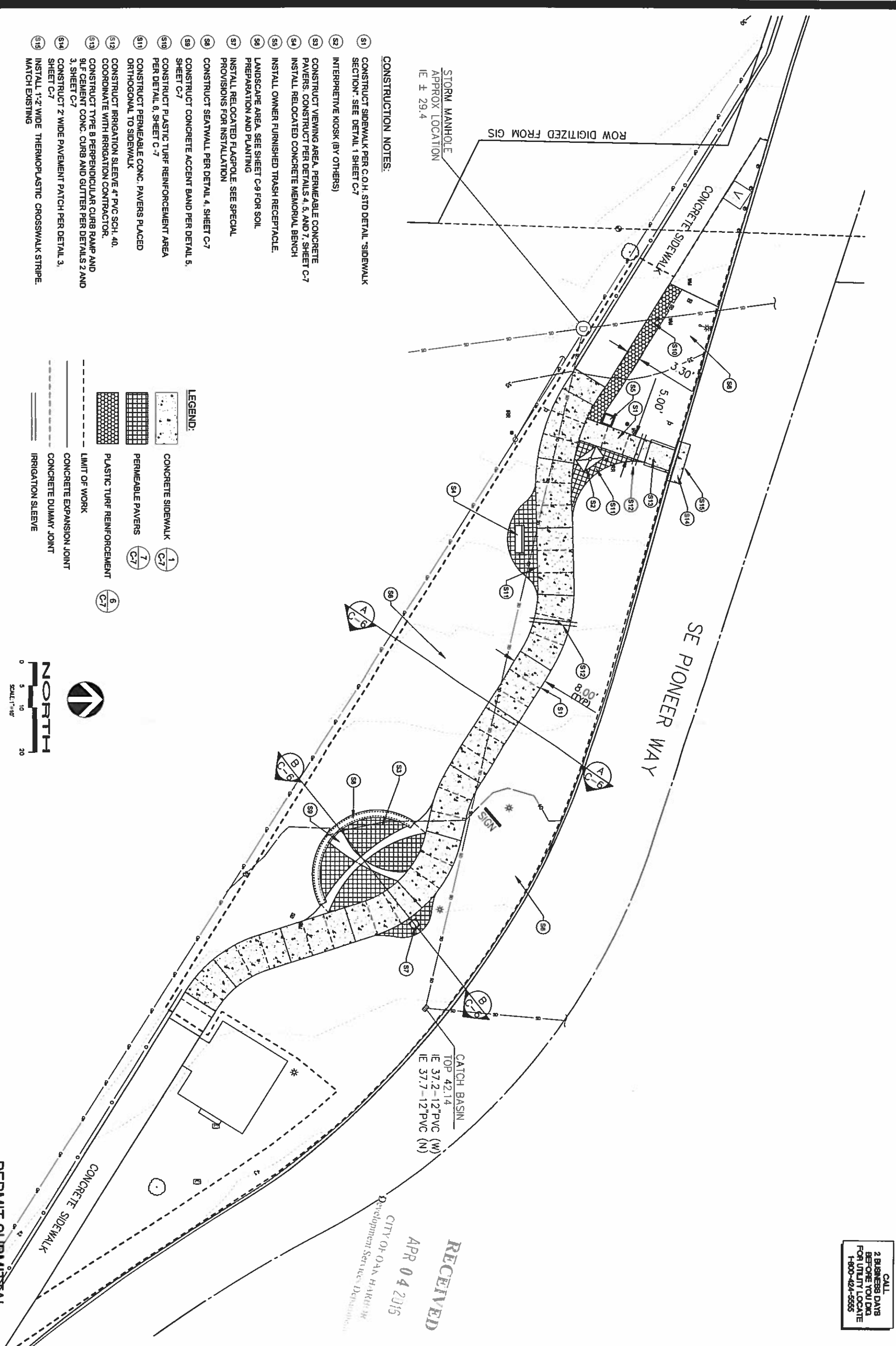
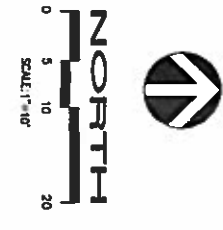


- CONSTRUCTION NOTES:**
- ① CONSTRUCT SIDEWALK PER C.O.H. STD DETAIL "SIDEWALK SECTION". SEE DETAIL 1 SHEET C-7
 - ② INTERPRETIVE KIOSK (BY OTHERS)
 - ③ CONSTRUCT VIEWING AREA, PERMEABLE CONCRETE PAVERS. CONSTRUCT PER DETAILS 4, 5, AND 7, SHEET C-7
 - ④ INSTALL RELOCATED CONCRETE MEMORIAL BENCH
 - ⑤ INSTALL OWNER FURNISHED TRASH RECEPTACLE.
 - ⑥ LANDSCAPE AREA. SEE SHEET C-9 FOR SOIL PREPARATION AND PLANTING
 - ⑦ INSTALL RELOCATED FLAGPOLE. SEE SPECIAL PROVISIONS FOR INSTALLATION
 - ⑧ CONSTRUCT SEATWALL PER DETAIL 4, SHEET C-7
 - ⑨ CONSTRUCT CONCRETE ACCENT BAND PER DETAIL 5, SHEET C-7
 - ⑩ CONSTRUCT PLASTIC TURF REINFORCEMENT AREA PER DETAIL 8, SHEET C-7
 - ⑪ CONSTRUCT PERMEABLE CONC. PAVERS PLACED ORTHOGONAL TO SIDEWALK
 - ⑫ CONSTRUCT IRRIGATION SLEEVE 4" PVC SCH. 40. COORDINATE WITH IRRIGATION CONTRACTOR.
 - ⑬ CONSTRUCT TYPE B PERPENDICULAR CURB RAMP AND 9/4" CEMENT CONC. CURB AND GUTTER PER DETAILS 2 AND 3, SHEET C-7
 - ⑭ CONSTRUCT 2" WIDE PAVEMENT PATCH PER DETAIL 3, SHEET C-7
 - ⑮ INSTALL 1'-2" WIDE THERMOPLASTIC CROSSWALK STRIPE. MATCH EXISTING

- LEGEND:**
- CONCRETE SIDEWALK (1) SHEET C-7
 - PERMEABLE PAVERS (7) SHEET C-7
 - PLASTIC TURF REINFORCEMENT (6) SHEET C-7
 - LIMIT OF WORK
 - CONCRETE EXPANSION JOINT
 - CONCRETE DUMMY JOINT
 - IRRIGATION SLEEVE



PERMIT SUBMITTAL

RECEIVED
 APR 04 2015
 CITY OF OAK HARBOR
 Development Services Department

CALL
 2 BUSINESS DAYS
 BEFORE YOU DIG
 FOR UTILITY LOCATE
 1-800-424-5555



DAVID EVANS AND ASSOCIATES, INC.
 1820 W. Marine View Drive, Suite 200
 Everett, Washington 98201
 Phone: 425.258.4099



SITE PLAN
VETERANS MEMORIAL PARK
WATERFRONT TRAIL REPAIR
 SE PIONEER WAY
 OAK HARBOR, WA

REVISIONS: APPD.
 DATE: MARCH 2015
 DESIGN: JCCA
 DRAWN: GCR
 CHECKED: JNS
 REVISION NUMBER:
 SCALE:
 PROJECT NUMBER:
 COAK0004
 DRAWING FILE:
 L4-COAK0004-C4.dwg
 SHEET NO.
C-4
 of 10